



USER MANUAL

OUSIA

FOUNTAIN


Explore Your Essence™

Produced by Ousia Labs | June 2024



Safety Precautions (Safe Operation and Use)

When using electrical appliances, basic safety precautions should be followed, including the following:

1. Read all instructions before using.
2. Do not touch hot surfaces. Use handles and knobs when available.
3. This appliance must be properly installed and located in accordance with these instructions before it is used.
4. The use of accessory attachments not recommended by the appliance manufacturer may result in fire, electrical shock or injury to persons.
5. Do not place on or near a hot gas or electric burner, or in a heated oven.
6. Do not use outdoors.
7. To protect against fire, electric shock and injury do not immerse cords, plugs, or the appliance in water or any other liquid.
8. Use only CO2 in this appliance! Do not put any other liquids or gases in the appliance except as instructed in the Cleaning Instructions in this guide.
9. Turn Off and unplug the extractor before cleaning or maintenance. Allow to cool and release all pressure before putting on or taking off parts and before cleaning the product.
10. Turn off and unplug the extractor before cleaning or maintenance. Allow to cool before putting on or taking off parts and before cleaning the appliance. reduces the risk of electrical shock.
11. For best operation, plug the appliance into its own electrical outlet on a dedicated circuit to prevent flickering of lights, blowing of fuses or tripping a circuit breaker.
12. Do not operate any appliance with a damaged cord or plug or after the appliance malfunctions or is damaged in any manner. Contact Ousia Labs' Customer Service to report any malfunction of or damage to the extractor.
13. Do not let the cord hang over the edge of the table or counter, or touch hot surfaces.
14. To disconnect, press the Power Button on the extractor to "OFF" status and then remove the plug from the wall outlet.
15. Close supervision is necessary when any appliance is used by or near children.
16. Do not loosen lid while extracting is in progress.
17. Always keep the Process Chamber and Extraction Chamber Lid on unless you are refilling it or emptying it for cleaning.
18. This appliance is equipped with a power cord having a grounding wire with a grounding plug.
19. Do not, under any circumstances, cut or remove the third (ground) prong from the power cord or use an adapter.
20. Consult a qualified electrician if the grounding instructions are not completely understood, or if doubt exists as to whether the appliance is properly grounded. installed and located in accordance with these instructions before it is used.
21. Do not use the appliance for other than its intended use.
22.  **DANGER:** A CO2 leak can lead to carbon dioxide poisoning. In the event of a CO2 leak, ventilate the area, breathe fresh air and if feeling unwell seek immediate medical attention.
23. The CO2 system produces a concentrated oil which must be diluted before internal and most external uses. Please consult a licensed medical professional for proper guidance.

SAVE THESE INSTRUCTIONS.

WARNING TO USERS AND PARENTS

DO NOT permit children to use the extractor unless there is adult supervision. Extractor is under pressure, it can emit dry ice, and it produces concentrated substances.

CAUTION. The extraction vessel is under extreme pressure. If there are any threads damaged or the sealing gasket will not seat well in the chamber then do not operate the extractor.

CAUTION. The process vessel is under extreme pressure. If there are any threads damaged or the sealing gasket will not seat well in the chamber then do not operate the extractor.

CAUTION. The internal tubing and fittings are under extreme pressure. If there are any issues with the internal components then do not operate the extractor.

CAUTION. Do NOT overpack the vessel.

CAUTION. Do NOT extract material without the filter basket. Finely ground powders can clog the machine, so be sure to use additional filtration paper and or media.

Compressed Carbon Dioxide Gas can be dangerous if not handled correctly. Please review the following CO₂ safety guidelines before performing any machine operations. Refer to the supplier's CO₂ MSDS for more information and warnings.

- Avoid breathing gas/exposure to gas.
- Use and store only outdoors or in a well-ventilated area.
- Close the tank valve after each use.
- Store and use only in a cool, dry place.
- Avoid direct contact with skin as frostbite may occur.
- Do not get in eyes, skin, or clothing.

WARNING! Liquid and Gas Under Pressure

WARNING! Rapid release of gaseous CO₂ can result in the formation of dry ice

WARNING! Concentration levels of CO₂ above 1% are dangerous.

- Always wear proper protective equipment when cleaning or operating the machine. Safety Glasses.
- Always operate the machine in a well-ventilated area.
- Always keep children and pets away while operating the machine.
- Always operate the machine within the confines of local laws and federal regulations.
- Always follow all rules and regulations regarding the handling and use of CO₂.
- Never use the machine for anything except its intended use(s).
- Never use any compressed gases other than CO₂ within the machine.
- Never operate the machine if any part(s) are damaged, worn, or broken.

Table of Contents:

SECTION 1 - Set-up and First Run

Connect CO ₂ Supply	3
Fill Extraction Chamber	4-5
LCD Controls (Start/Stop	6
Collecting Oil	7

SECTION 2 - Maintenance

Cleaning and Maintenance	9
Process Chamber	10
Features	

SECTION 3 - Certs and Disclaimer

PSI 3rd Party Certification	11
Warranty	12
Release of Liability	13



WARNING

RISK OF FIRE OR ELECTRIC SHOCK. DO NOT OPEN CASE.

WARNING: TO REDUCE THE RISK OF FIRE OR ELECTRICAL SHOCK DO NOT REMOVE THE TOP OR BOTTOM OF THE CASE. REPAIR SHOULD BE DONE BY AUTHORIZED SERVICE PERSONNEL ONLY.

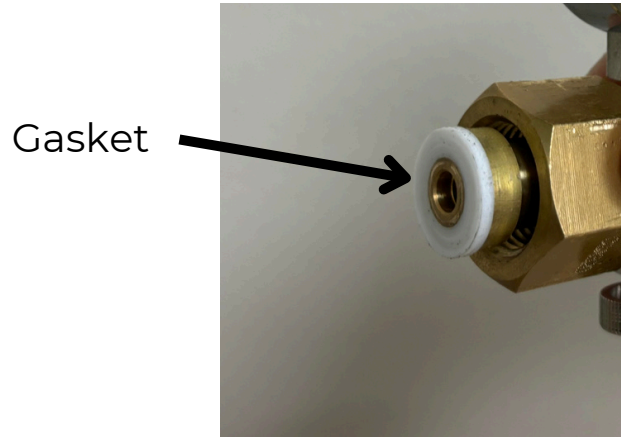
Set-Up: 1 of 3

When using electrical appliances, basic safety precautions should be followed, read the safety precautions on pages 2 and 3 before moving forward.

Quick Start Guide:

- Read all instructions before using.

1. Make sure to place the CO₂ gasket in between the tanks fitting (or TR21-4 adapter) and the stem of the CGA320 fitting.



2. Attach the CO₂ Tank to the Unit: Place the CO₂ gasket in the connector. Attach the CO₂ line to the tank by tightening the brass fitting. Use a large wrench or strap wrench to finish tightening.



3. Hose comes connected to the back of the system.



Set-Up: 2 of 3

When using electrical appliances, basic safety precautions should be followed, read the safety precautions on pages 2 and 3 before moving forward.

Assemble and Load the Extraction Chamber:

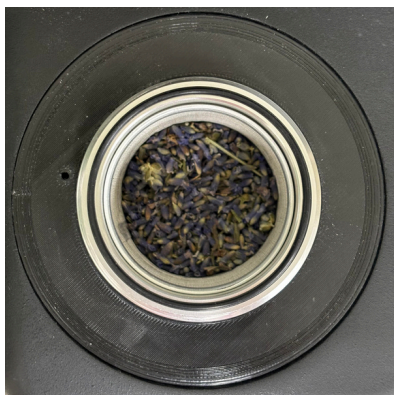
- Gather all materials: Lid, Disc, Gasket, Filter Basket, Botanical Material, and Extraction Chamber.
- Place Gasket on top of chamber fitting inside the groove.



- Fill the filter basket with dried botanical material.



- Place filter basket inside the Extraction Chamber.

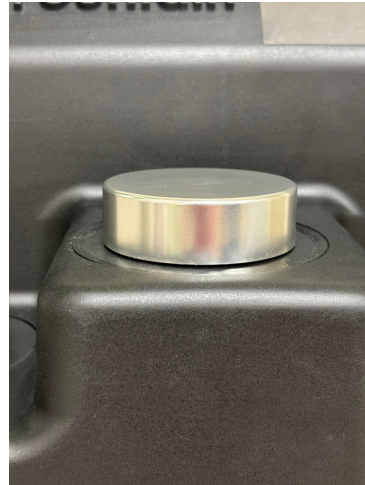
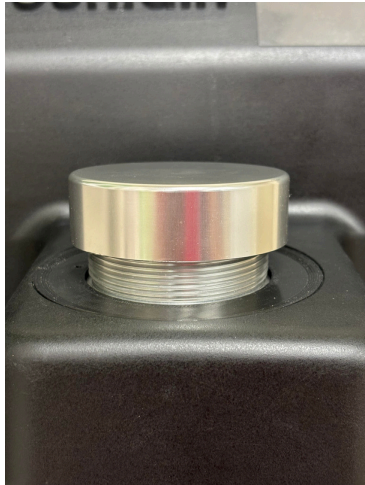


Set-Up: 3 of 3

When using electrical appliances, basic safety precautions should be followed, read the safety precautions on pages 2 and 3 before moving forward.

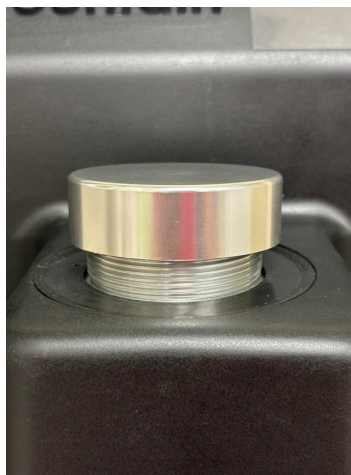
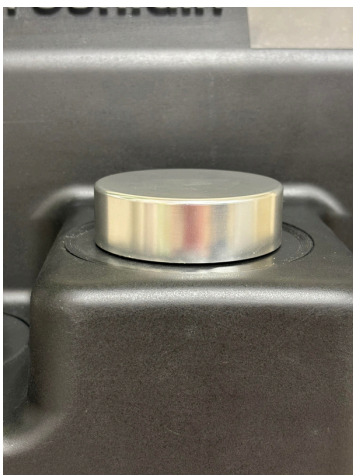
Close the Extraction Chamber:

- Secure lid to Extraction Chamber, hand tighten all the way



Opening the Extraction Chamber:

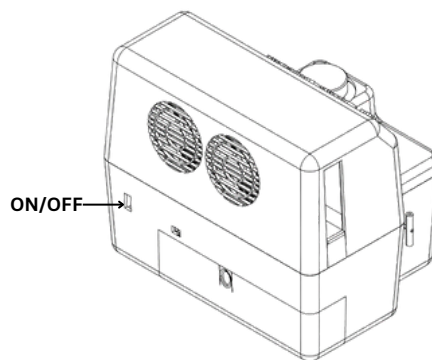
- Slowly loosen the lid to relieve any remaining pressure
- Remove lid
- Remove the filter basket
- Clean all parts before reassembly



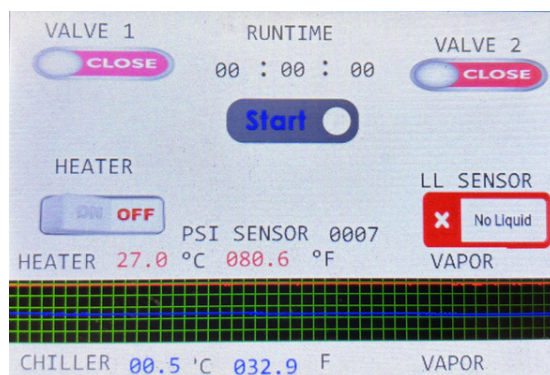
Run/Operate

When using electrical appliances, basic safety precautions should be followed, read the safety precautions on pages 2 and 3 before moving forward.

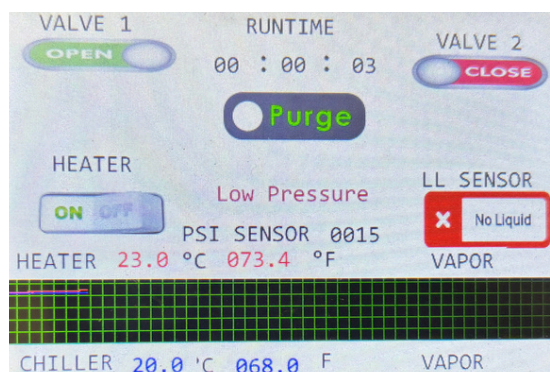
- 1 Turn Unit Power ON, located on back of the machine.



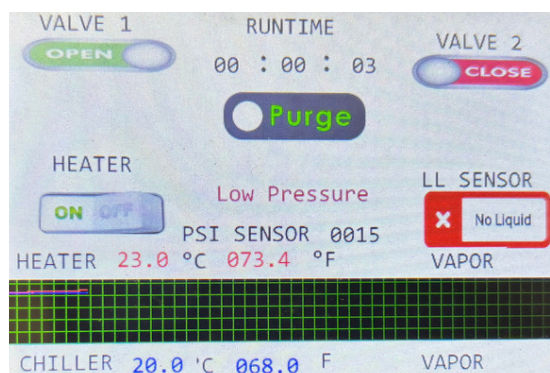
- 2 The LCD Screen will show real time temperatures. Wait until blue chiller line reads 0 degrees celsius.



- 3 Press Start On LCD screen. Valve 1 will Open for 4 minutes and then will close automatically.



- 4 An hour into your run it is advisable to let more CO2 into the machine. To do so, simply press Valve 1 on the touch screen to open the valve for one-two minutes and then press again to close.



Collect Oil

When using electrical appliances, basic safety precautions should be followed, read the safety precautions on pages 2 and 3 before moving forward.

Harvesting the extracted oil from the machine:

When you want to collect the oil press Purge.

- **SLOWLY** open Collection Valve on the left hand side of the machine.



- Collect oil is inside the glass jar.



Potential Yields

*Yield vary greatly across different types of botanical and their quality. These are based on research conducted in house by Ousia Labs.

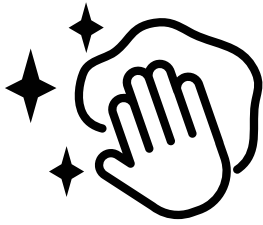
The CO2 system produces a concentrated oil which must be diluted before internal and most external uses. Please consult a licensed medical professional for proper guidance.

Ingredient Percentage:	5.0%	(Ranges from 1% to 10% Depending on the Botanical and Application)		
CO2's/Absolutes	Avg Yield (%)	Avg Yield (ml)	Ingredient per ml	Infused Product (ml)
Amberette Seed	1%	0.56	0.028	11.2
Angelica Root	1%	0.56	0.028	11.2
Arnica	1%	0.56	0.028	11.2
Black Cardamom	5%	2.52	0.126	50.4
Black Cumin	3%	1.68	0.084	33.6
Black Pepper	6%	3.136	0.1568	62.72
Blood Orange	3%	1.68	0.084	33.6
Blue Lotus	1%	0.56	0.028	11.2
Cannabis	2%	1.12	0.056	22.4
Cardamom Pod Green	3%	1.68	0.084	33.6
Carrot	3%	1.68	0.084	33.6
Chamomile	1%	0.56	0.028	11.2
Cinnamon	3%	1.4	0.07	28
Citronella	4%	1.96	0.098	39.2
Cocoa Bean	2%	1.12	0.056	22.4
Coriander Seed	3%	1.68	0.084	33.6
Lavadin	6%	3.2648	0.16324	65.296
Lavender (China)	2%	1.12	0.056	22.4
Lavender Extra	1%	0.56	0.028	11.2
Lemon balm	12%	6.7648	0.33824	135.296
Fennel	3%	1.68	0.084	33.6
Ginger	5%	2.8	0.14	56
Hemp	17%	9.52	0.476	190.4
Hops	14%	7.84	0.392	156.8
Jasemine	1%	0.56	0.028	11.2
Juniper (blue) Ground	5%	2.688	0.1344	53.76
Koji Blood Orange	4%	1.96	0.098	39.2
Koji Plai Ginger	1%	0.672	0.0336	13.44
Lemon Verbena	1%	0.56	0.028	11.2
Long Pepper	4%	1.96	0.098	39.2
Myhrr	6%	3.472	0.1736	69.44
Nutmeg	10%	5.6	0.28	112
Peppermint (USA)	1%	0.672	0.0336	13.44
Pink Pepper	4%	2.464	0.1232	49.28
Rosemary (common)	3%	1.792	0.0896	35.84
Rosemary (creeping)	4%	2.24	0.112	44.8
Sage (common)	4%	2.128	0.1064	42.56
Turmeric	3%	1.68	0.084	33.6
Vanilla	2%	1.12	0.056	22.4
Frankincense	6%	3.136	0.1568	62.72
Palo Santo	1%	0.56	0.028	11.2
Sandlewood	2%	1.12	0.056	22.4
Tobaco	1%	0.56	0.028	11.2
Rose	1%	0.56	0.028	11.2
Cedarwood	1%	0.56	0.028	11.2

Maintenance: 1 of 2

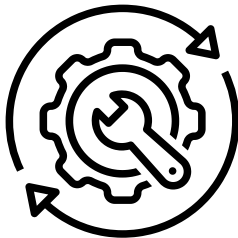
When using electrical appliances, basic safety precautions should be followed, read the safety precautions on pages 2 and 3 before moving forward.

Cleaning the Machine:



1. Ensure the entire machine is void of any pressure before performing any cleaning procedures. Take caution when using flammable solvents and/or cleaners and follow all recommended safety precautions associated with the solvent/cleaner.
2. Detach lids and clean vessels thoroughly using a safe cleaning solution for your application (ie. Ethanol).
3. Ensure the vessel(s) are thoroughly dried of any cleaning solution before resuming any machine operations.
4. For a deep clean, run the machine with just ethanol and CO₂. Dip paper towel in ethanol and place into Extraction Chamber. Discard in a safe manner. Do NOT dump into water system.

Routine Maintenance Schedule:



Routine maintenance box(s) are available for purchase along with other consumable products.

1. Gaskets: Replace as needed, if torn, stretched or damaged, or every 3 Months.
2. Filter Basket: Clean as needed with a cleaning solution suitable for your application. Replace if worn or damaged.
3. Keep the chiller fans clean using air duster as needed or every 6 months.

Maintenance: 2 of 2

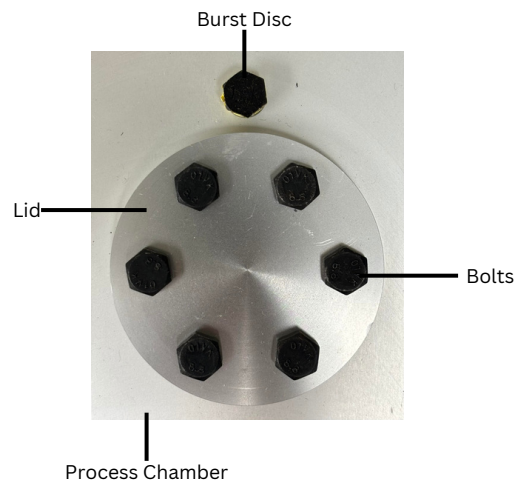
When using electrical appliances, basic safety precautions should be followed, read the safety precautions on pages 2 and 3 before moving forward.

Opening the Process Chamber:

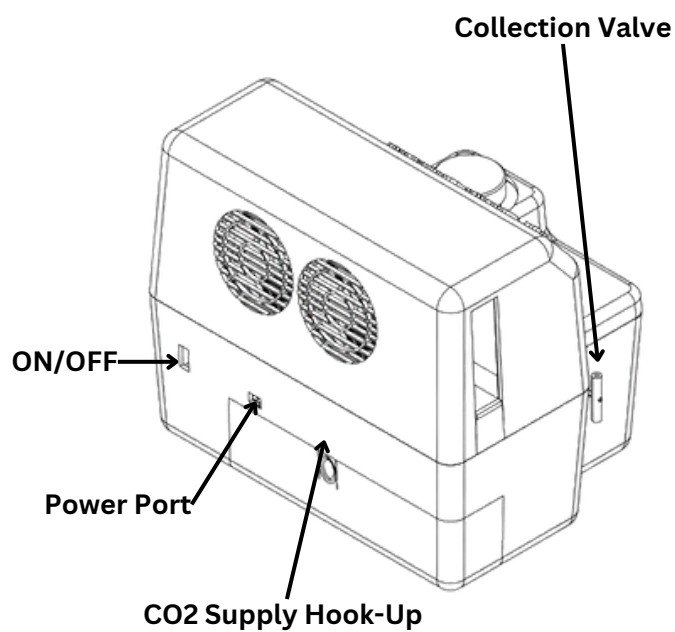
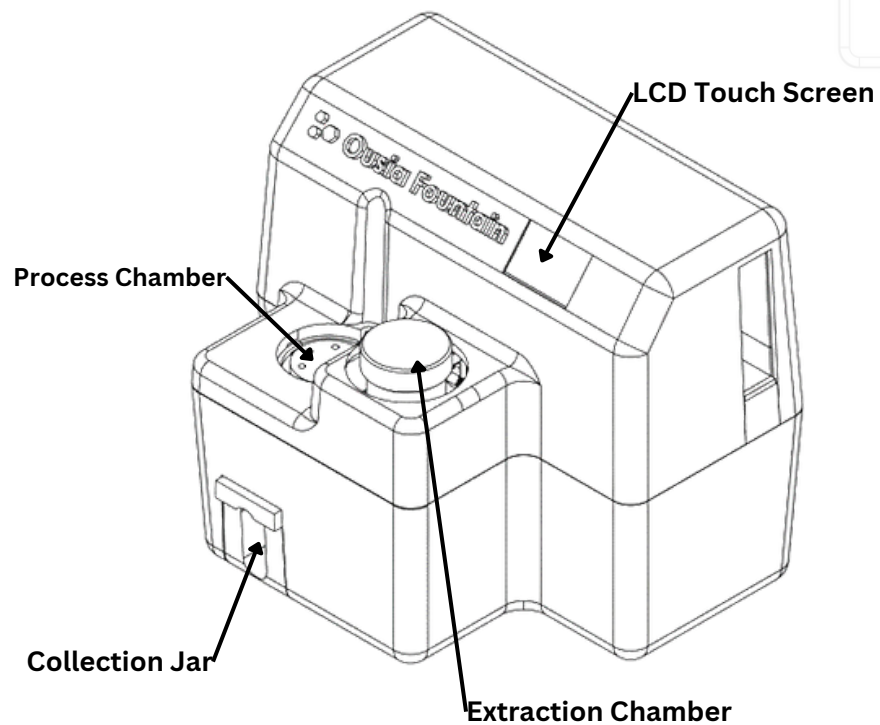
- Ensure the entire system is drained of all pressure.
- Loosen each bolt slightly.
- Pull up on the lid slightly to release any pressure.
- Loosen all the bolts and remove the lid/gasket.

Re-secure the Lid to the Process Chamber (comes installed):

- Place the gasket within the groove on the top of the vessel, ensuring it is seated correctly.
- Place the lid on top of the vessel, ensuring the holes are aligned with the screws.
- Loosely tighten each bolt by hand in a star pattern. All bolts should be seated firmly against the lid if installed correctly (note: never over tighten bolts, replace bolts as needed).
- Apply 7.4 foot-pounds of torque to the M6 Bolts in a star pattern to all bolts.



Ousia Fountain Features



Certifications

PSI Certified -

California Fire Code, 2019 International Fire Code, 2021 Oregon Fire Code, 2019

Washington State Fire Code, 2020 Edition (WAC 51-54A) NFPA 1 Fire Code, 2021 Edition

NFPA 55 Compressed Gases and Cryogenic Fluids Code, 2020 Edition

ASME Boiler and Pressure Vessel Code, Section VIII, Division 1, 2019 Edition

All components in accordance with -
CE, UL

Product Warranty -

ESSENTIAL EXTRACTION CORPORATION LIMITED 1 YEAR WARRANTY

Essential Extraction Corporation warrants that the enclosed Ousia Fountain™ product was originally manufactured free of defects in material, workmanship, and mechanical function. Essential Extraction Corporation will correct any manufacturing defect in the Ousia Fountain™ product for the original purchaser, free of charge, with the same or comparable quality components; provided that, the Ousia Fountain™ product is returned freight prepaid to:

Essential Extraction Corp.
815 14th Street SW, Bldg C250
Loveland, Colorado 80537

The Ousia Fountain™ product is sold “as is” with no implied contractual rights or warranties beyond those expressly stated herein. This limited 1 year warranty is in lieu of all other express or implied warranties, obligations or liabilities.

THERE ARE NO EXPRESS WARRANTIES WHICH EXTEND BEYOND THE FACE HEREOF AND ALL IMPLIED WARRANTIES INCLUDING ANY IMPLIED WARRANTY OF MERCHANTABILITY, OR FITNESS FOR A PARTICULAR PURPOSE OR OTHERWISE ARE SPECIFICALLY EXCLUDED.

IN NO EVENT SHALL ESSENTIAL EXTRACTION CORPORATION BE LIABLE FOR ANY SPECIAL, INCIDENTAL, INDIRECT, ECONOMIC, OR CONSEQUENTIAL DAMAGES, WHATSOEVER, INCLUDING, WITHOUT LIMITATION, PERSONAL INJURY TO PURCHASER OR ANY OTHER THIRD PARTY, LOSS OF BUSINESS PROFITS, BUSINESS INTERRUPTION, LOSS OF GOODWILL, OR ANY OTHER INJURY OR PECUNIARY LOSS, OR DAMAGE ARISING OUT OF THE USE OF OR INABILITY TO USE THE OUSIA FOUNTAIN PRODUCT.

The limited 1 year warranty extends to the original owner and is not transferable to any other person. The warranty does not apply to any accessory items attached or appurtenant to the Ousia Fountain™ product and excludes Ousia Fountain™ products damaged due to normal wear and tear, unauthorized modifications, embellishments or alterations, improper use, improper maintenance, improper installation, accident, misuse, negligence, damage, or if the product is used for a purpose for which it was not designed or not used in accordance with the Ousia Fountain™ product instruction. Essential Extraction Corporation will use reasonable discretion to determine the validity of warranty claims.

This warranty gives you specific legal rights, and you may also have other rights which vary from state to state. Some states do not allow limitations of implied warranties or on how long an implied warranty lasts or the exclusion or limitation of incidental or consequential damages, so the above limitation or exclusion may not apply to you. No amendment or alteration, written or verbal, to this warranty is authorized.

Please contact our sales department for further details and requirements. info@ousialabs.com

Release of Liability: Read Carefully - This Affects Your Legal Rights

In exchange for participation in the activity of using the Ousia Fountain or any Essential Extraction Corp's D.B.A Ousia Labs products organized by Ousia Labs, of 815 14th St SW, Bldg C250, Loveland, Colorado, 80537 and/or use of the property, facilities, and services of Ousia Labs, I, Customers, of Ousia Labs, agree for myself and (if applicable) for the members of my family, to the following:

1. **Assumption of the Risks and Release.** I recognize that there are certain inherent risks associated with any and all co2 extraction activity and I assume full responsibility for personal injury to myself and (if applicable) my family members, and further release and discharge Ousia Labs for injury, loss, or damage arising out of my or my family's use of or presence upon the facilities of Ousia Labs, whether caused by the fault of myself, my family, Ousia Labs or other third parties.

2. **Indemnification.** I agree to indemnify and defend Ousia Labs against all claims, causes of action, damages, judgments, costs, or expenses, including attorney fees and other litigation costs, which may in any way arise from my or my family's use of or presence upon the facilities of Ousia Labs.

3. **Fees.** I agree to pay for all damages to the facilities of Ousia Labs caused by any negligent, reckless, or willful actions by me or my family.

4. **Applicable Law.** Any legal or equitable claim that may arise from participation in the above shall be resolved under Colorado law.

5. **No Duress.** I agree and acknowledge that I am under no pressure or duress to sign this agreement and that I have been given a reasonable opportunity to review it before signing. I further agree and acknowledge that I am free to have my own legal counsel review this agreement if I so desire. I further agree and acknowledge that Ousia Labs has not offered to refund any fees I have paid to use its facilities if I choose not to sign this agreement.

6. **Arm's Length Agreement.** This agreement and each of its terms are the product of an arm's length negotiation between the Parties. In the event any ambiguity is found to exist in the interpretation of this agreement or any of its provisions, the Parties, and each of them, explicitly reject the application of any legal or equitable rule of interpretation which would lead to a construction either "for" or "against" a particular party based upon their status as the drafter of a specific term, language, or provision giving rise to such ambiguity.

7. **Enforceability.** The invalidity or unenforceability of any provision of this agreement, whether standing alone or as applied to a particular occurrence or circumstance, shall not affect the validity or enforceability of any other provision of this agreement or of any other applications of such provision, as the case may be. Such invalid or unenforceable provision shall be deemed not to be a part of this agreement.

8. **Dispute Resolution.** The parties will attempt to resolve any dispute arising out of or relating to this agreement through friendly negotiations among the parties. If the matter is not resolved by negotiation, the parties will resolve the dispute using the below Alternative Dispute Resolution (ADR) procedure:

Any controversies or disputes arising out of or relating to this agreement will be submitted to mediation in accordance with any statutory rules of mediation. If mediation does not successfully resolve the dispute, then the parties may proceed to seek an alternative form of resolution in accordance with any other rights and remedies afforded to them by law.

I HAVE READ THIS DOCUMENT AND UNDERSTAND IT. I FURTHER UNDERSTAND THAT BY PURCHASING OUSIA LAB'S PRODUCTS, I VOLUNTARILY SURRENDER CERTAIN LEGAL RIGHTS.

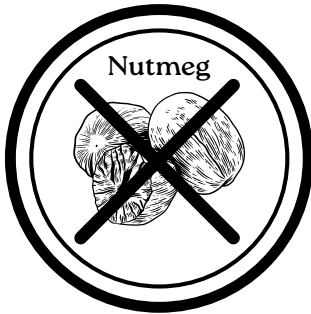
Botanical Safety Precautions

Botanical Extracts can have potential hazards and health risks. Some botanical extracts contain compounds that are toxic or unsafe. Ensure you fully understand the risks associated with a botanical extract before using. Always seek professional/medical advice if you are unsure. It is ALWAYS your responsibility to comply with local laws and regulations.



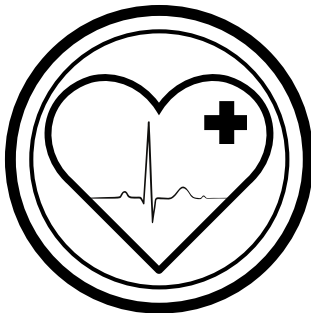
DO NOT EXTRACT HOT PEPPERS

Hot pepper extract contains mostly pure capsaicin, a potent irritant. Capsaicin is the active ingredient in bear mace and pepper spray.



DO NOT EXTRACT NUTMEG

Nutmeg contains myristicin, a natural insecticide listed within the Hazardous Substances Data Bank



CONSULT A DOCTOR

- Do not use botanical extracts if pregnant or breastfeeding
- Botanical extracts may have unknown interactions with prescription medications
- Botanical extracts may have unknown side effects

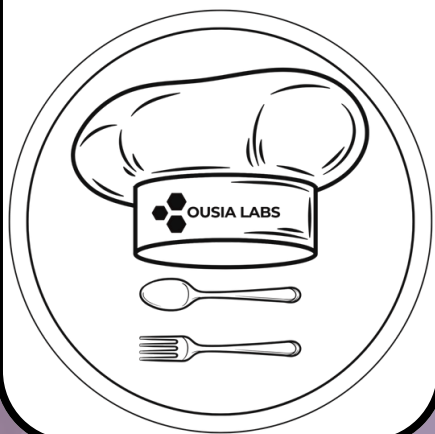
****The statements made within this document have not been evaluated by the Food and Drug Administration. These statements and the products of this company are not intended to diagnose, treat, cure or prevent any disease.****

Extract Standard Bases & Recipe Guidance



Botanical Extracts are extremely potent and should **ALWAYS** be diluted before use. Below is a reference on how to dilute your extract for various uses. You will want to choose your carrier depending on your application. Keep in mind this is a guideline for maximum dilution ratios, you will often use less

Culinary Oil



Max Dilution

1 %

Max Extract : Carrier Ratio

1g : 100g

Max / Serving

10 g or 10 ml

Carrier Options

Olive Oil, MCT Oil,
Butter, Tallow

Botanical Syrup



Max Dilution

1 %

Max Extract : Carrier Ratio

1g : 100g

Max / Serving

10 g or 10 ml

Carrier Options

Agave, Honey,
Mollasses

Extract Standard Bases & Recipe Guidance

Flavor Drops



Max Dilution

10%

Max Extract : Carrier Ratio

1g : 10g

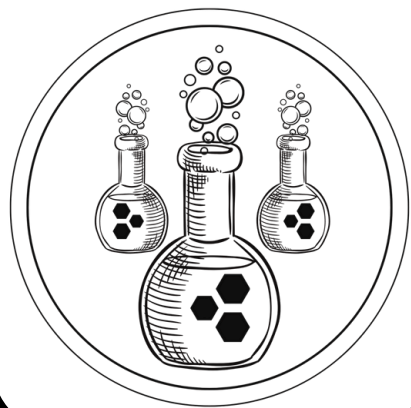
Max / Serving

1 g or 1 ml

Carrier Options

Everclear or High
Proof Alcohol

Topical Oil



Max Dilution

10%

Max Extract : Carrier Ratio

1g : 10g

Safety Precautions

Spot test a
small area
before general
use

Carrier Options

Joboba Oil,
Sunflower Oil

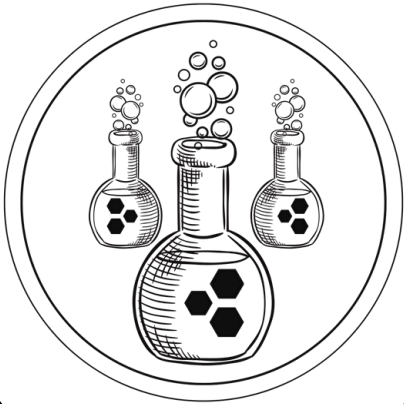


Check out our
recipe book!



Extract Standard Bases & Recipe Guidance

Topical Wax



Max Dilution

10%

Max Extract : Carrier Ratio

1g : 10g

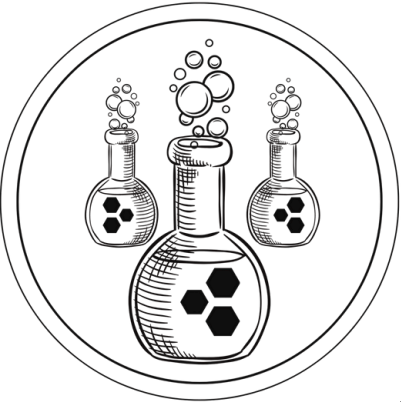
Safety Precautions

Spot test a
small area
before general
use

Carrier Options

Coconut Oil, Shea
Butter, Cocoa Butter,
and many more

Cleaning & Perfume



Max Dilution

20%

Max Extract : Carrier Ratio

2g : 10g

Safety Precautions

Take care
around pets
and children

Carrier Options

Isopropyl Alcohol,
Witch Hazel, High
Proof Alcohol



Check out our
recipe book!



Recipe Book

Recipe Title

Servings

Time

Notes

Extract Base:

Botanical Name

Botanical Source

Extract : Carrier

Carrier Type

Notes

Ingredients:

Steps:

1

4

2

5

3

6

Recipe Book

Recipe Title

Servings

Time

Notes

Extract Base:

Botanical Name

Botanical Source

Extract : Carrier

Carrier Type

Notes

Ingredients:

Steps:

1

4

2

5

3

6

Notes



OUSIA LABS